

In-Cave Data Logger Project (DLP)

Sponsored by the
Central Connecticut Grotto

www.ctcavers.org
www.ctcavers.org/datalogger

This project is a work in progress, is frequently updated, and done entirely by unpaid volunteers. For more information, updates, and other documents, please contact info@ctcavers.org and put "CCG Data Logger" in the subject line. If you don't get a reply within a week, please call 860-621-2080.

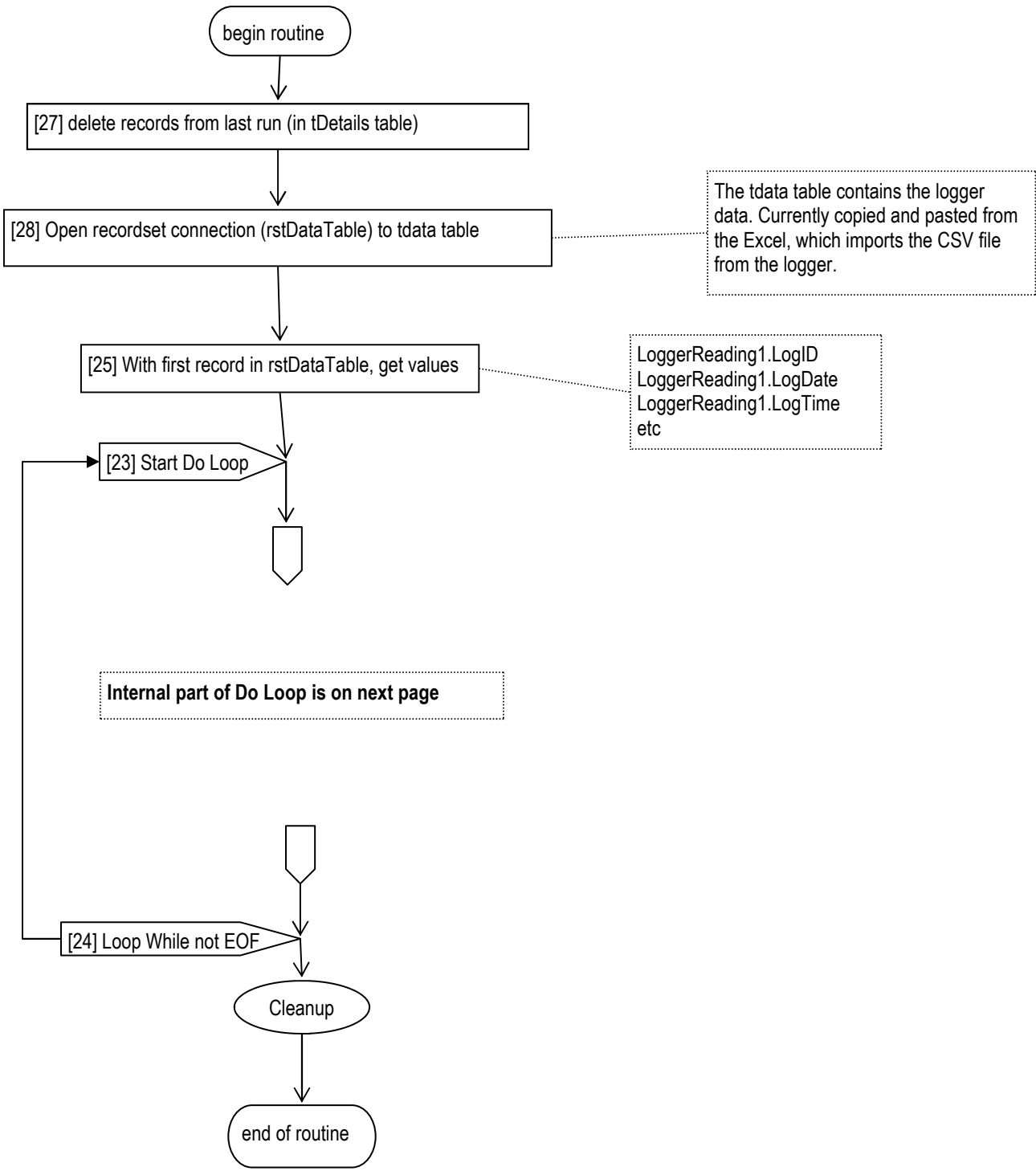
CCG DLP - MS Access Flowchart

Contents:

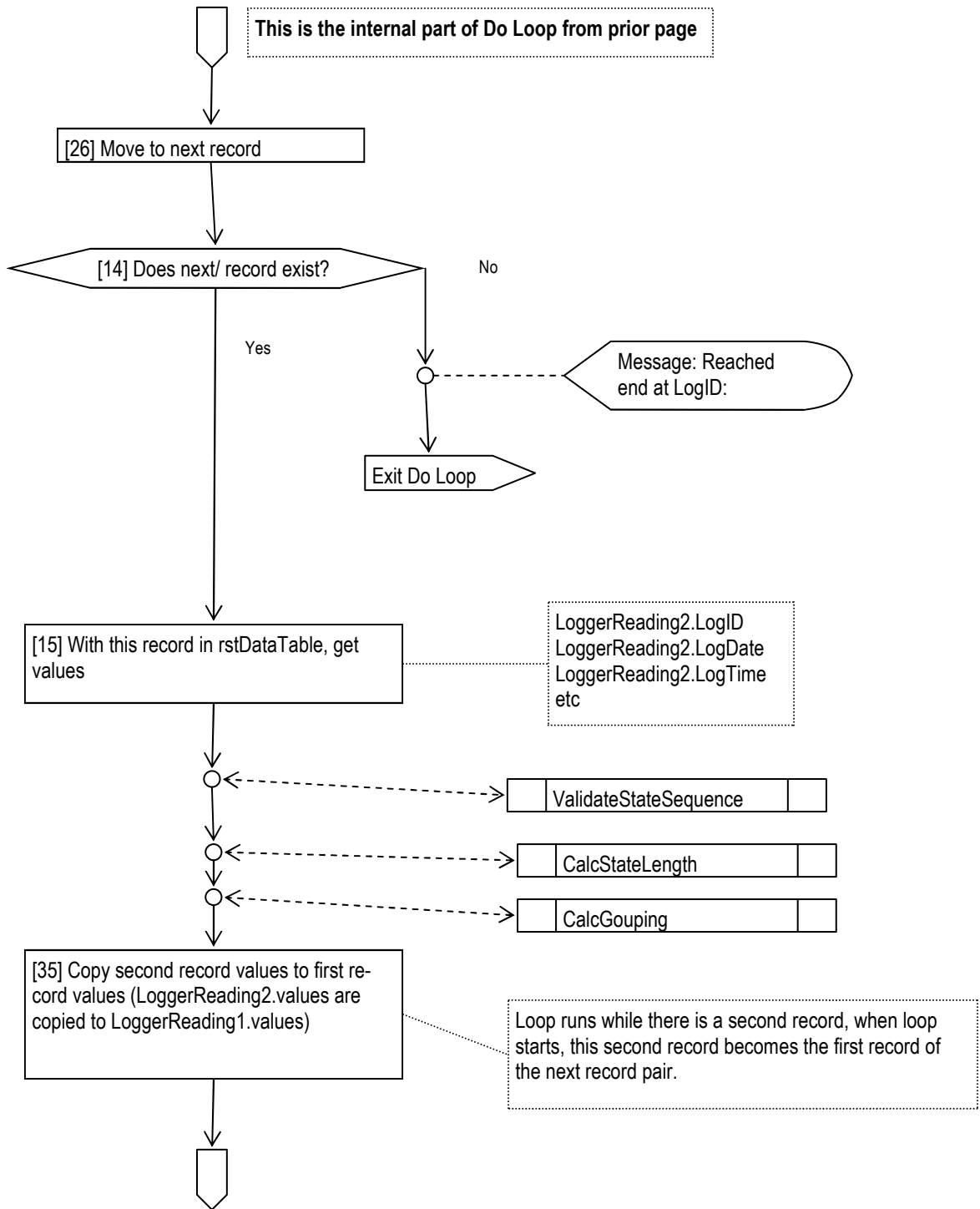
- Module: basLogger Sub: RecordsDetailsLoop
- Module: basLogger Sub: RecordsDetailsLoop Do Loop
- Module: basLogger Sub: CalcStateLength
- Module: basLogger Sub: ValidateStateSequence
- Module: basLogger Sub: CalcGrouping
- Module: basLogger Sub: MakeDetailsTable
- Module: basLoggerGraphing Sub: GroupingForGraphing Do Loop
- Module: basLoggerGraphing Sub: GraphingPastMidnight
- Module: basLoggerGraphing Sub: GraphingPastMidnight
- Module: basLoggerGraphing Sub: MakeGroupToPlotTable

Note: The user interface is developed to the point of a rough draft. There is currently no code behind the form and the UI. It is not shown in this document.

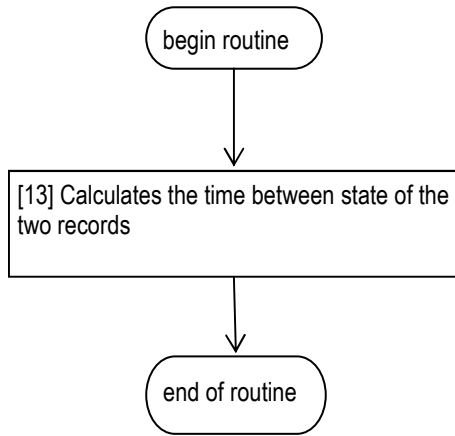
Module: basLogger
Sub: RecordsDetailsLoop



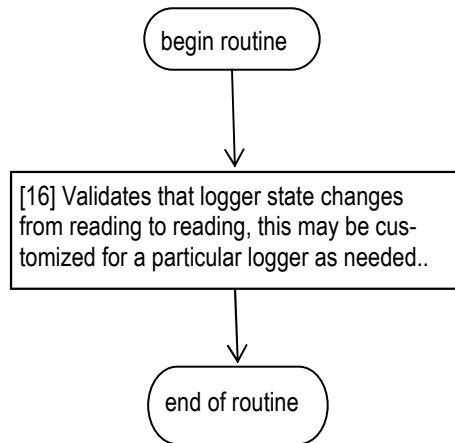
Module: basLogger
Sub: RecordsDetailsLoop Do Loop



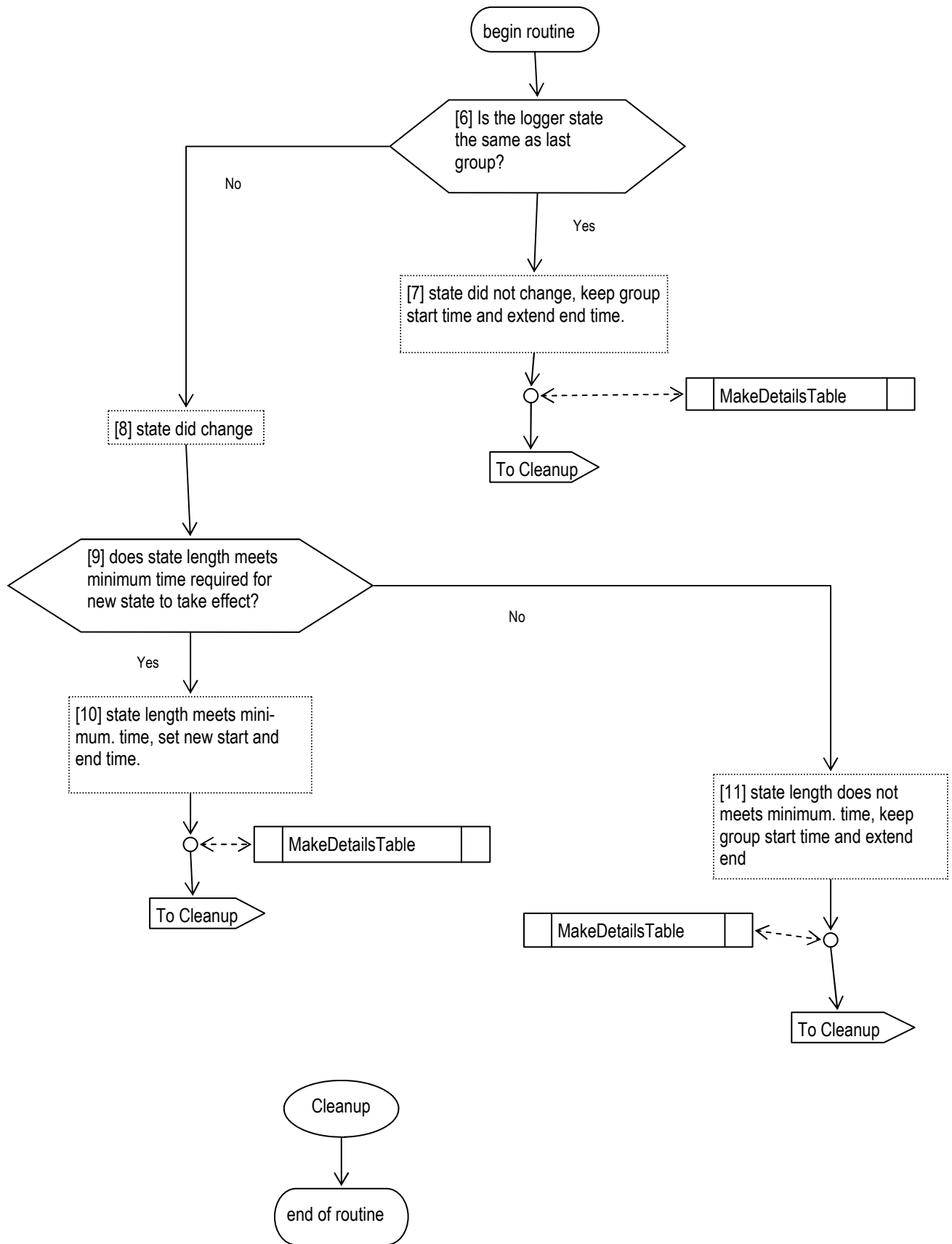
Module: basLogger Sub: CalcStateLength



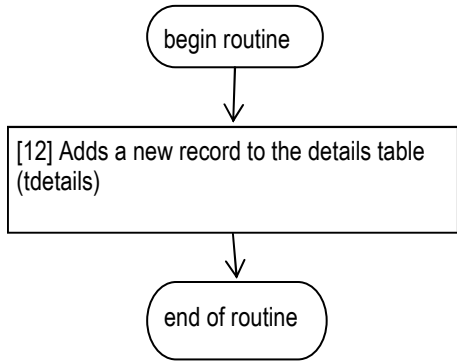
Module: basLogger Sub: ValidateStateSequence



Module: basLogger
Sub: CalcGrouping



Module: basLogger
Sub: MakeDetailsTable

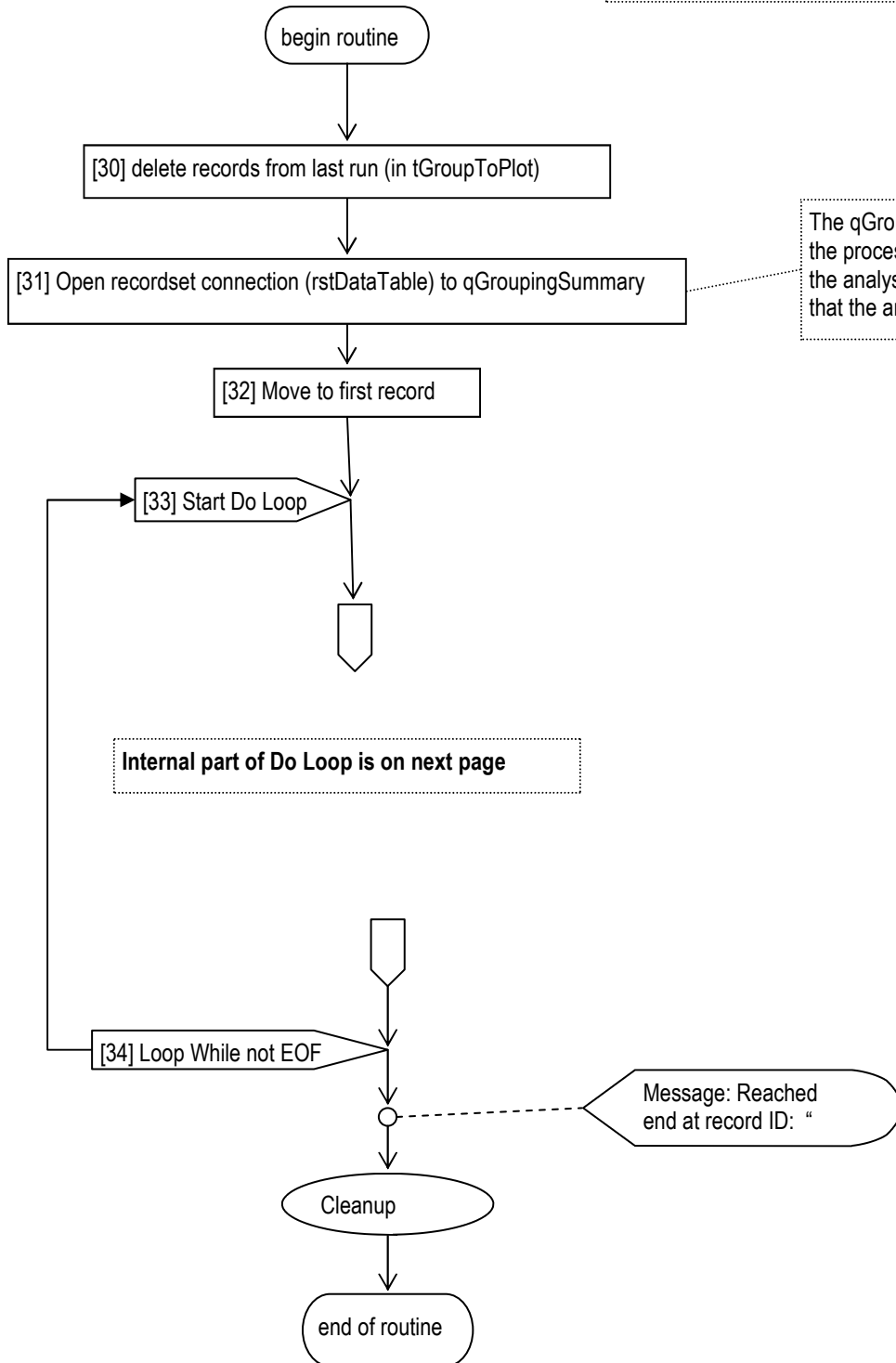


Note:
Charting requires that groups that continue past midnight are broken into subgroups, each contained within one day. This is done in a code section for charting.

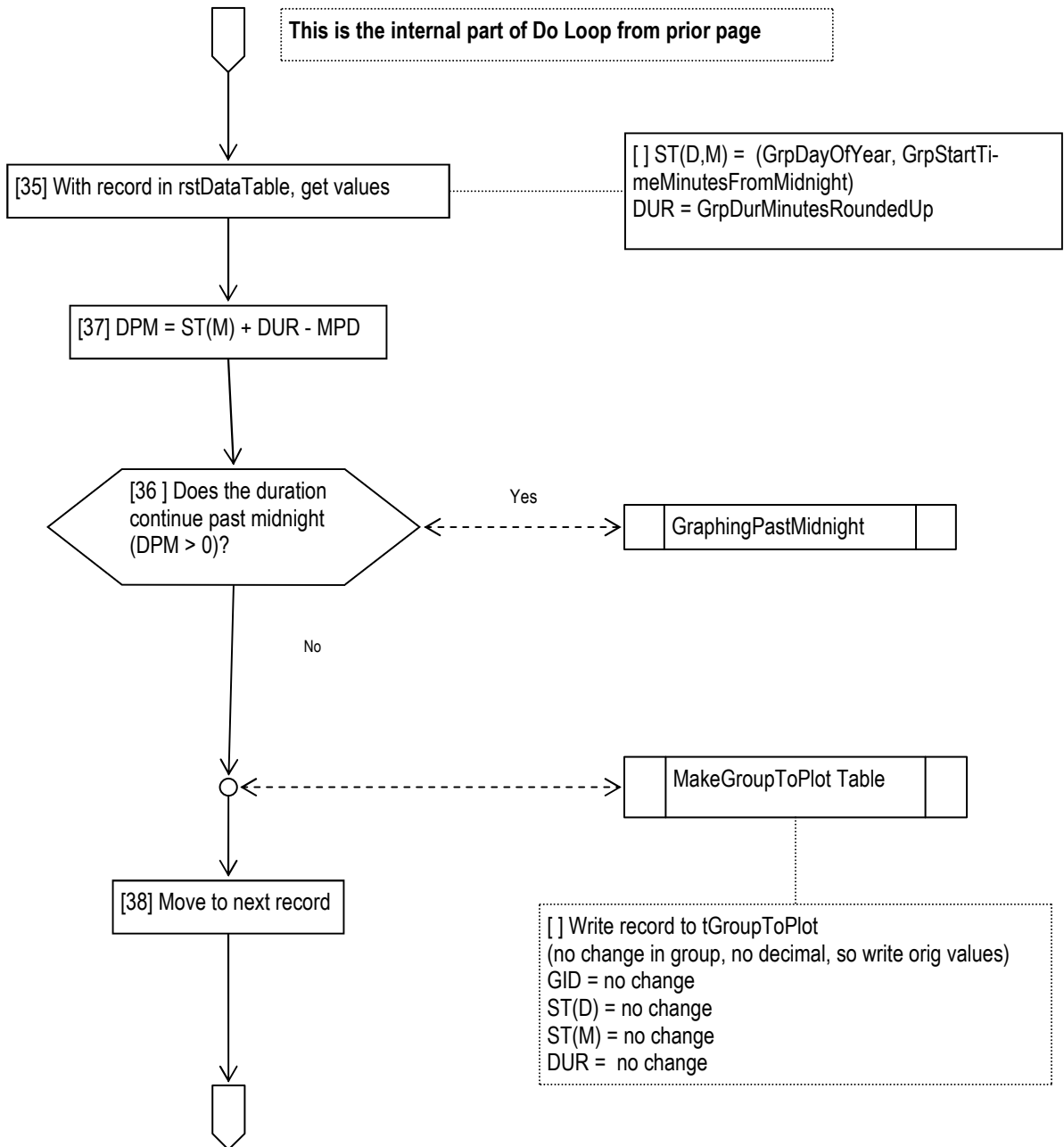
Note:
Charting requires that groups that continue past mid-
night be broken into subgroups, each contained
within one day. This is done in this code section.

KEY TO ABBREVIATIONS
MPD = Minutes Per Day (constant 1440)
GID = Group ID (initial value is from qGroupingSummary)
ST(D,M) = Start Time, comprised of Day of Year and Minutes from
Midnight (initial values from qGroupingSummary)
DUR = Group Duration (initial value is from qGroupingSummary)
DPM = Duration past midnight

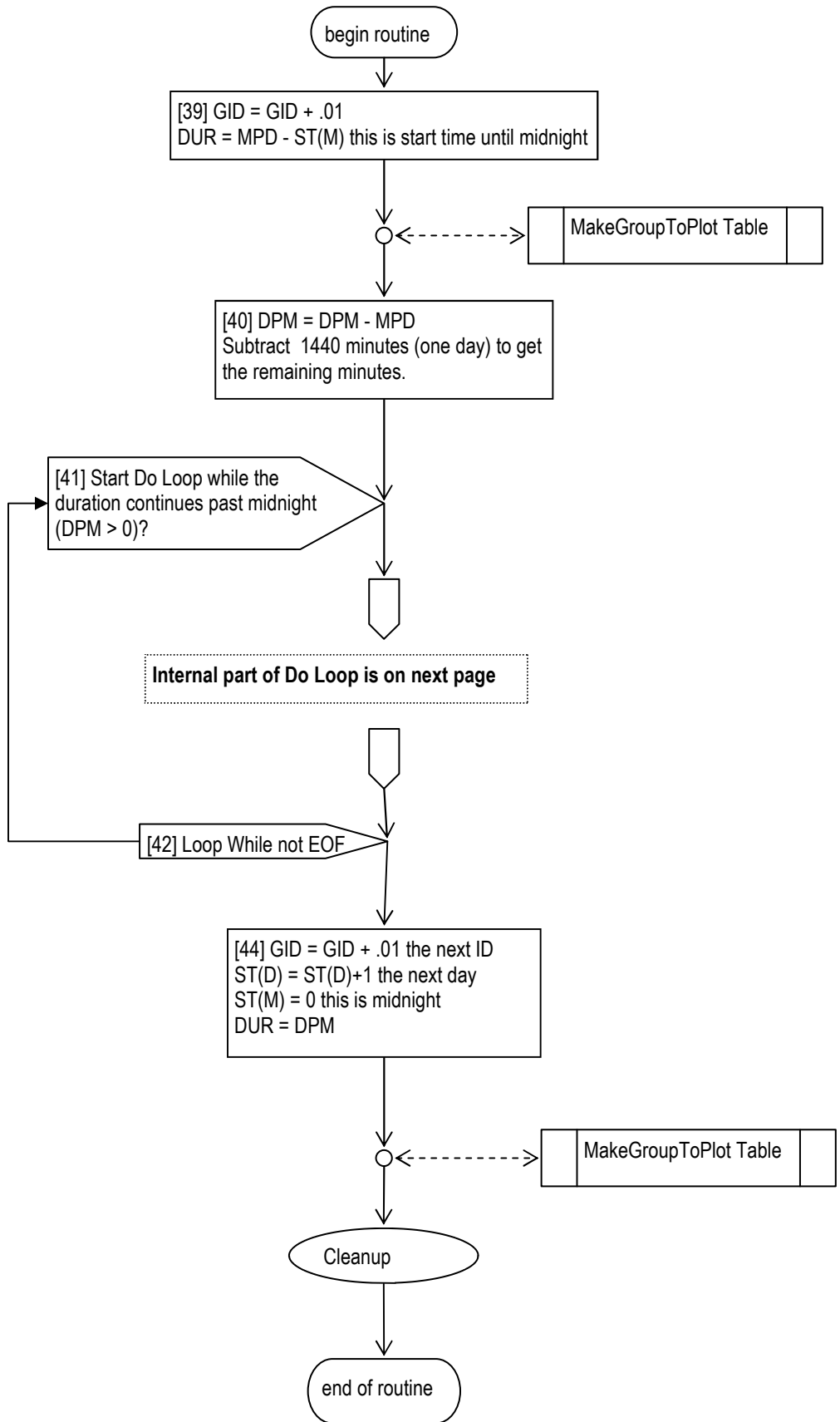
Module: basLoggerGraphing
Sub: GroupingForGraphing



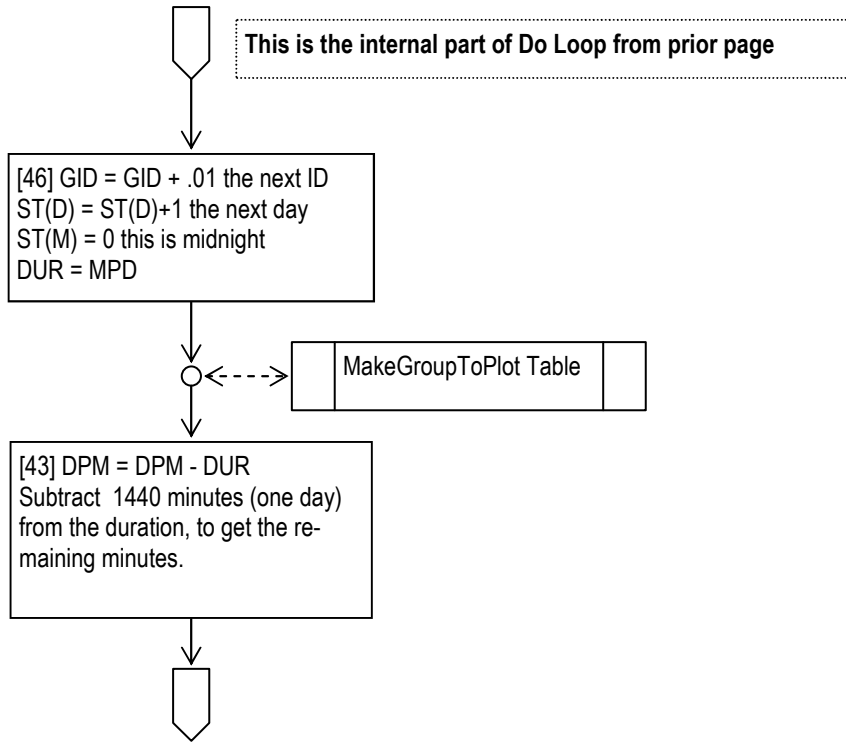
Module: basLoggerGraphing
Sub: GroupingForGraphing: Do Loop



Module: basLoggerGraphing Sub: GraphingPastMidnight



Module: basLoggerGraphing Sub: GraphingPastMidnight Do Loop



Module: basLoggerGraphing Sub: MakeGroupToPlotTable

